

WHITES[®]

Thinking Outside

Retain-iT[®]

Heavy Duty Retaining Post System

Retaining walls made easy

Combining the strength of steel and the natural beauty of timber, Retain-iT makes it easy to construct retaining walls up to 800mm high




JOINER POST



CORNER POST



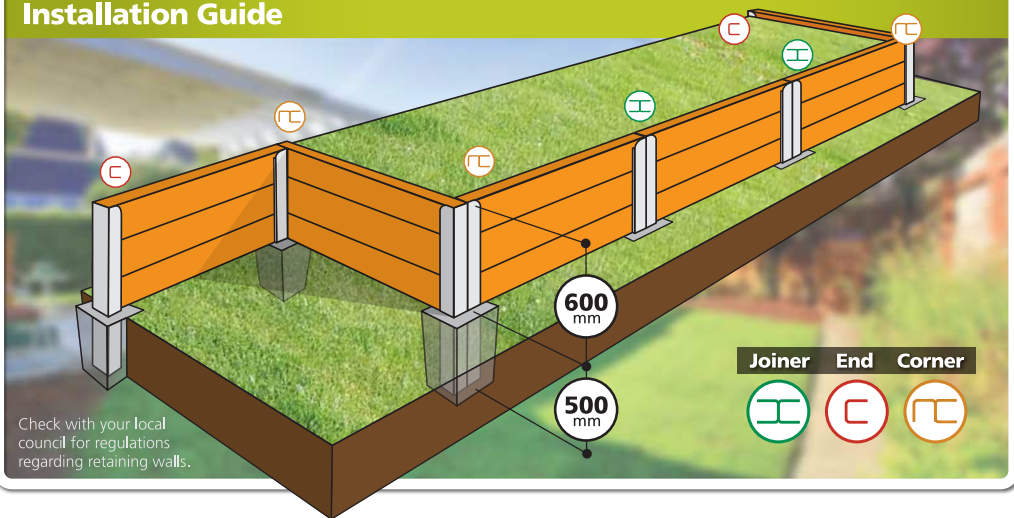
END POST

 Like us on Facebook

facebook.com/whitesthinkingoutside

Thinking Outside
think **WHITES**

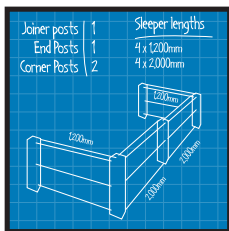
Installation Guide



Check with your local council for regulations regarding retaining walls.



As easy as 1, 2, 3



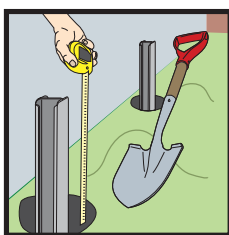
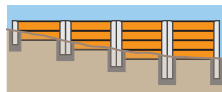
Step 1 : Design and plan

Measure your planned space and design the layout of your retaining wall on paper. Remember to include the heights required.

Determine the post sections and number of posts required by referring to the Product Selection Guide.

Galvanised steel is suitable for use with quick-setting or regular concrete.

Tip Use multiple heights of Retain-iT on sloping blocks for a level finish.

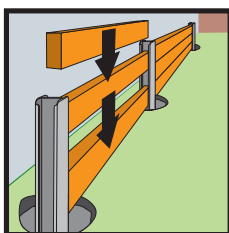
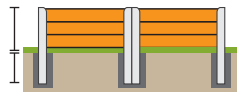


Step 2 : Prepare the site

Clear the area and mark out the run of your wall and the position of your posts. Dig holes for each post, and double check that your sleepers will fit snugly.

For stability, the posts should be approximately halfway below ground and halfway above. Walls with shallow foundations will be less stable.

Tip Concrete one post at a time, adding sleepers as you go to ensure a straight wall.



Step 3 : Build and concrete

Use a level and string line to ensure posts are straight and upright. Pour concrete to set the post at the correct height and spacing – a quick-setting concrete is recommended.

Insert your timber sleepers and move on to the next post until your retaining wall is complete.

Tip For a different finish, add a layer of timber capping to the top of the wall.



Retain-iT[®]

Heavy Duty Retaining Post System

- ✓ Long-life steel
- ✓ Professional look
- ✓ Quick and easy



Converts timber sleepers into timber walls

A retaining post system that provides a snug fit so that the sleeper is dropped in and immediately secured. No packing or fastening is required.

As functional as it is beautiful, the system has the strength and long-life of high tensile, galvanised steel; and is flexible enough to cater to retaining walls up to 800mm high.

Available in 4 post heights and 3 configurations

1
SLEEPER HIGH
200mm Retaining Wall
POST HEIGHT (mm) **450**

2
SLEEPERS HIGH
400mm Retaining Wall
POST HEIGHT (mm) **750**

3
SLEEPERS HIGH
600mm Retaining Wall
POST HEIGHT (mm) **1100**

4
SLEEPERS HIGH
800mm Retaining Wall
POST HEIGHT (mm) **1500**

To suit all
50mm & **75mm**
timber sleepers

50mm POST SYSTEM
75mm POST SYSTEM

JOINER POST
Joins sleepers in straight lines

CORNER POST
Corner post for a perfect 90° corner

END POST
A neat finish for the end of a wall

Retain-iT[®]

Heavy Duty Retaining Post System



Watch our Retain-iT[®] video here
whitesgroup.com.au/retainit



Retain-iT Fence Bracket

Attach to Retain-iT to create a sturdy fence post support

Retain-iT Fence Brackets easily bolt on to Retain-iT posts to allow steel channel and timber fence posts to be added to your retaining walls.

Available in 50mm & 75mm

Installation guide: whitesgroup.com.au/bracket



slot-in & bolt-on



Retain-iT Stakes - for garden beds and lighter duty applications

Simply lay out your sleepers, drive the stake into the ground and nail or screw through pre-drilled holes to secure your timber sleeper border.



Corner Sleeper Stake
16001

Sleeper Stake
16002



Corner Retaining Stake
16011

Retaining Stake
16012



For more information visit our website at whitesgroup.com.au



Watch our Retain-iT video here

www.whitesgroup.com.au/retainit

Quality products from the Whites range.
Whites Group Pty Ltd ABN 25 001 845 478

[facebook.com/whitesthinkingoutside](https://www.facebook.com/whitesthinkingoutside)