



PRODUCT CATALOGUE

CLADDING | PANELS | WEATHERBOARDS



≡ **COLLECTION 2023** ≡

A better choice, *naturally*

Weathergroove 150 Smooth



Winner Supplier of the Year 2018
Australian Construction Awards

Winner Top Trusted Brand 2016-18
Architecture & Design

Winner National Export Award 2017
Master Builders Australia

Finalist Sustainability Awards 2017
Architecture & Design

TRUSTED BRANDS 2018
ARCHITECTURE//DESIGN
— WINNER No.1 BRAND —

TRUSTED BRANDS 2016
ARCHITECTURE//DESIGN
— WINNER No.1 BRAND —

Primelok Federation Smooth



Weathergroove 75 Smooth



Weathergroove 150 Natural

A BETTER CHOICE



Weathergroove 75 Natural

Timber is the ultimate renewable resource. Weathertex products are Australian owned with a better than zero carbon footprint, environmentally sensitive and in touch with today's industrial standards, for a cleaner environment. We have a very unique manufacturing process and the only product of its kind in the world, containing absolutely no added silica, glues, resins or formaldehydes. Being completely safe during installation and throughout its long life, Weathertex ticks all the boxes.

All Weathertex products are manufactured using waste timber, PEFC certified from State Forests. No old growth hardwood is ever used, so there's minimal environmental impact and avoids depletion of natural resources.

A better choice, naturally.

SINCE 1939

The manufacturing facility was originally founded in 1939 in Raymond Terrace, NSW. For over 50 years, Weathertex products have been manufactured. Weathertex has shifted focus to be at the forefront of environmentally sound and durable building products.

BENEFITS



MADE IN AUSTRALIA

Family owned and manufactured in the Hunter region, NSW since 1939.



SAFE

Low VOC. Meets Australian Building Standards. 100% natural product. CodeMark Australia certified (exc. Rubix) No added silica, glues, resins or formaldehydes.



TRUSTED

WeatherTex voted #1 MOST TRUSTED brand in the building industry by Architecture & Design latest survey. Won SUPPLIER OF THE YEAR in the Australian Construction Awards.



STYLISH CHOICES

A wide selection of profiles available in various styles, textures and sizes. Easy to incorporate the natural with primed profiles together to offer multiple design options. Curved walls can be achieved down to a minimum of 2.5m radius for Selflok and 7m for Weathergroove.



SUSTAINABLE

Better than zero carbon footprint with Third Party Credentials - GreenTag certification, PhD, PEFC. Low embodied energy.



VALUE FOR MONEY

No special tools required for cutting. Large panels and lower wastage costs on Weathergroove Range. Lightweight product - reduces labour costs.



DURABLE

Termite Resistant. Warranty tried and tested not to rot, split or crack for up to 25 years. Natural range is the only timber product in the market to provide a 10 year warranty. 1000 kg/m³ product density with a minimum 32MPa rating.

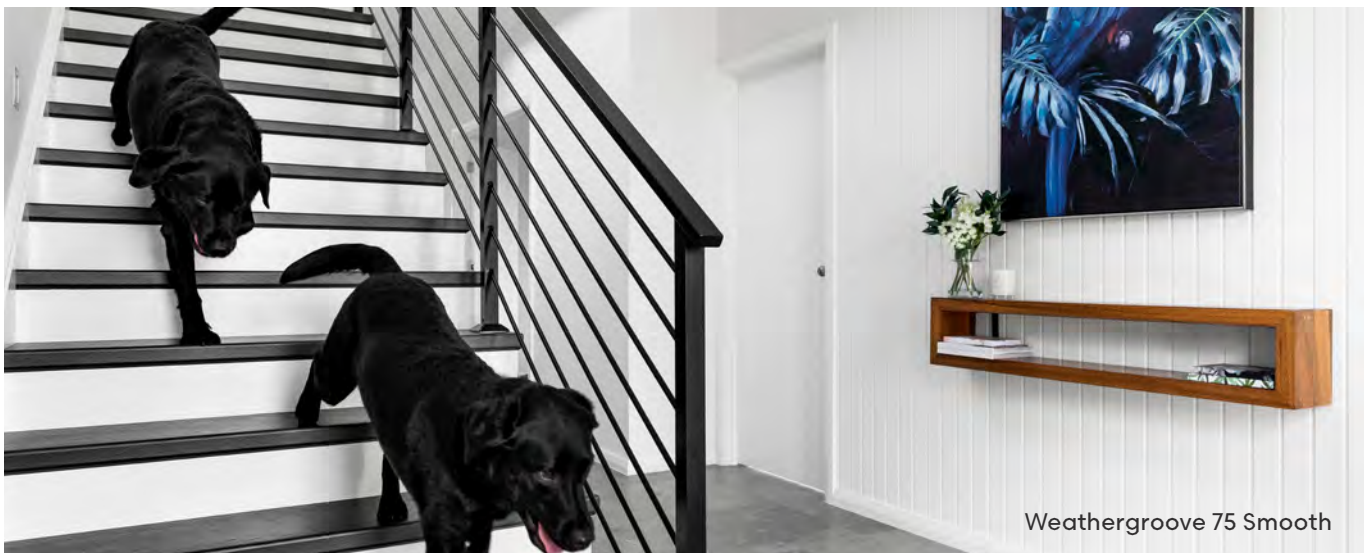


QUICK & EASY INSTALLATION

Larger panels for quick installation. 9.5mm thickness and matching accessories across all products making it easier to mix multiple profiles within a project. Easier to paint than other materials on the market due to its smoother surface.



For the latest Installation Manuals scan QR code.



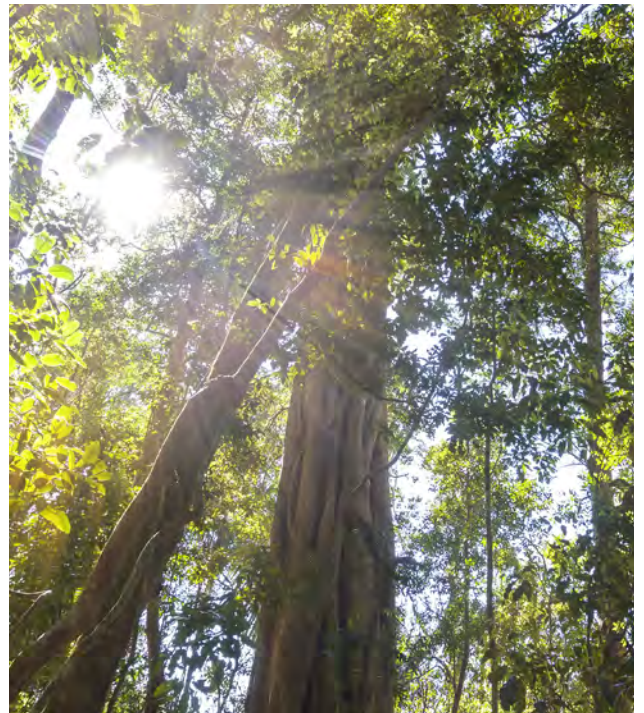
Weathergroove 75 Smooth

SUSTAINABILITY &

Timber is the ultimate renewable resource and all Weathertex products are made from 97% hardwood and 3% paraffin wax. Weathertex primed products are finished with a water-based lead-free acrylic primer. All Weathertex boards are manufactured using waste timber sourced from Australian, PEFC-certified harvesters. No old growth hardwood is ever used, so there's minimal environmental impact and the depletion of natural resources is avoided. Weathertex is the only product of its kind in the world to contain absolutely no artificial glues or binders.

No toxic or polluting chemicals are required when making Weathertex products. The manufacturing process of all Weathertex products minimises waste through resource recovery systems. This includes creating compost, using the offcut board as fuel, creating briquettes and using it as packaging. Weathertex's on-site water management system is unique and highly sustainable, it reduces water usage by ensuring processed water is treated and recycled. Weathertex has a BETTER THAN ZERO carbon footprint – making it a sustainable choice!

Like most timber products, Weathertex can be reused/ repurposed for various usages – other construction applications, recycled into packaging, used as fuel or turned into compost. Even in landfill, Weathertex does not rot/breakdown, so the carbon stored in it will remain contained indefinitely.



LESS THAN ZERO CARBON FOOTPRINT

More carbon is stored in the timber used to make Weathertex than is produced during its manufacture, which is why it has a better than zero carbon footprint. In this regard, Weathertex is unmatched at this price-point making it the natural choice in the changing global environment.

Certifications

Weathertex have been through a rigorous evaluation from Global GreenTag Pty Ltd to determine our outstanding "green performance" and we are proud to announce we are the FIRST manufactured product to receive a GreenTag Platinum certification with a GreenRate R Level A for our Natural range. Additionally, we've received Gold certification for our primed flat cladding and wall panel sheets.



Responsible Wood & PEFC Certified



CodeMark® Certified
Weathergroove, Selflok, Primelok & Classic



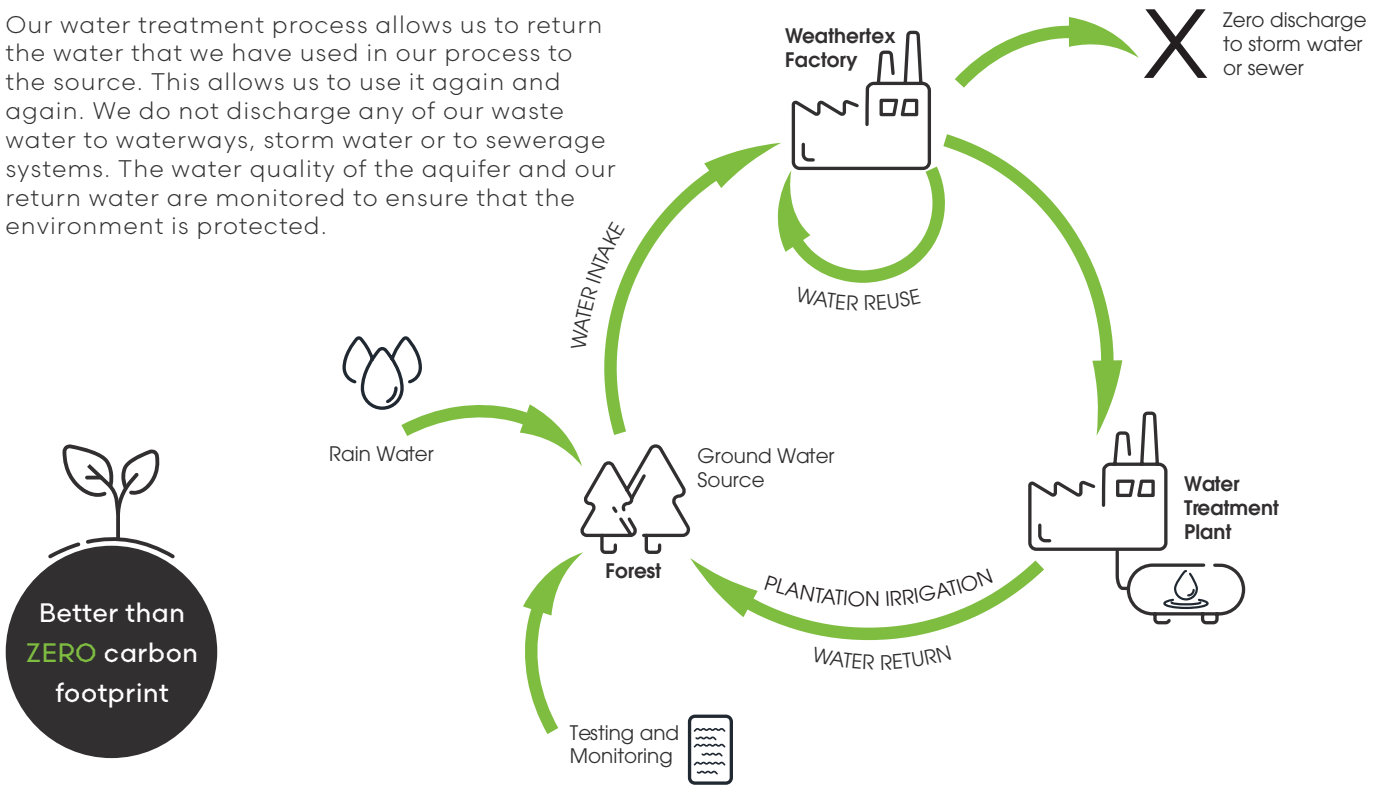
MANUFACTURING

WATER

Water is a resource that is essential to the production of Weathertex products. Weathertex is committed to the sustainable and responsible use of this vital resource. Weathertex sources groundwater on our factory site. We monitor the levels of the aquifer to ensure that our water extraction from the land doesn't exceed the recharge rate from natural rainfall.

We aim to minimise the amount of water that we use. Our manufacturing process is designed to reuse water many times over before we pass it on to our water treatment process. We ensure that we avoid the addition of toxic substances in our water circuits that may bio accumulate or have other adverse environmental or health effects.

Our water treatment process allows us to return the water that we have used in our process to the source. This allows us to use it again and again. We do not discharge any of our waste water to waterways, storm water or to sewerage systems. The water quality of the aquifer and our return water are monitored to ensure that the environment is protected.



Better than
ZERO carbon
footprint

ENERGY

Weathertex is committed to reducing the amount of energy needed to manufacture our products. Over the last five years, through continuous improvement of our processes, improving efficiency and eliminating waste we have reduced the energy input required to manufacture each piece of Weathertex by 20%. We are continually identifying new opportunities and are committed to do more.

WASTE STREAM UTILISATION

Every manufacturing process generates waste. Weathertex is committed to minimising the amount of waste that we send to landfill. We minimise the waste that we produce and then segregate our remaining waste streams to allow us to redirect them to achieve the highest value through reuse and recycling. We design our packaging and products and select recyclable materials so that we do not pass undue waste burden onto our customers. We have achieved near zero product waste to landfill by conversion on site into packaging materials or biofuel for energy generation or off site through NSW EPA approved resource recovery and waste utilisation programs.



**WASTE
REDUCTION**



RE-USE



RECYCLING



BIO ENERGY



**RESOURCE
RECOVERY**

NATURAL CLADDING

The Natural range offers a unique appearance with the characteristics and looks of raw undressed timber. Its surface is pressed to create a random woodgrain effect, showing the knots, grains and imperfections of natural timber.



Made from real Australian hardwoods.



Natural woodgrain appearance.



The only natural timber product with 10 YEAR WARRANTY not to rot, split or crack.



Various styles & treatments - Leave to silver-off in direct sunlight, stain or a combination of both to produce totally unique aesthetic results.



Global GreenTag Platinum certification when left unsealed.



Curved walls can be achieved down to a minimum of 2.5m radius for Selflok and 7m for Weathergroove.



Weathertex can be used internally (group 3) and as an external wall cladding in bushfire attack levels up to and including BAL 19 construction.

For more product information or to order a sample scan QR code.



To view Installation information for Natural products scan QR code.





PROFILES

Architectural Panels



Weathergroove
75^ Natural

3660h x 1196w mm



Weathergroove
150^ Natural

3660h x 1196w mm



Weathergroove
300^ Natural

3660h x 1196w mm



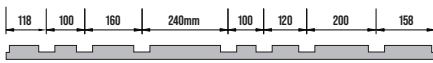
Weathergroove
1200^ Natural

3660h x 1196w mm

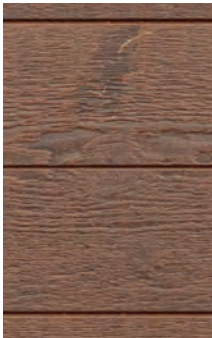


Weathergroove Fusion Natural

3660 x 1196mm



Weatherboards



Selflok Vgroove
150^ Natural

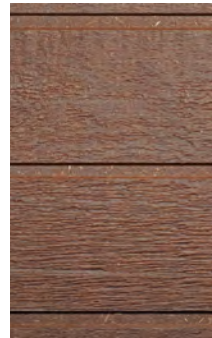
300h x 3660w mm



NEW
RELEASE

Selflok Ecogroove
75^ Natural

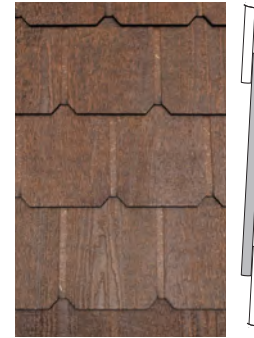
300h x 3660w mm



Selflok Ecogroove
150^ Natural

300h x 3660w mm

Wall Shingles Plus



Classic Shingles
Plus Natural

225h x 1196w mm

Cladding is 9.5 mm in thickness and also available in Primed (excl. Vgroove).

^ Refers to groove spacing.



Weathergroove 150 Natural

FREE
TAKE-OFF
SERVICE

ACCESSORIES

TRIMTEC ACCESSORIES - Made from anodised aluminium

Small Internal LF Corner



L = 3660mm
a = 27mm
b = 11mm
c = 55mm

Small External LF Corner



L = 3660mm
a = 27mm
b = 11mm
c = 31mm

Small End Stop



L = 3660mm
a = 27mm
b = 11mm
c = 46mm

Small Internal Corner



L = 3660mm
a = 4mm
b = 11mm
c = 35mm

Small External Corner



L = 3660mm
a = 17mm
b = 11mm
c = 35mm

Internal Combo Corner



L = 3660mm
a = 20.9mm
b = 10.7mm
c = 58.3mm
d = 48.3mm
e = 4mm

Weathergroove Joiner*



L = 3660, 2745,
2440mm
a = 11mm
b = 5mm
c = 50mm

Long Vertical Joiner (Selflok)



L = 3660mm
a = 20mm
b = 70mm

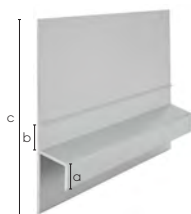
External Combo Corner



L = 3660mm
a = 27.3mm
b = 20.9mm
c = 10.7mm
d = 35mm
e = 45mm

*Optional for Natural Installation
*Also use for Classic Shingles Plus

Small Z Flashing



L = 3670mm
a = 10mm
b = 10mm
c = 73mm

Small Corner Plug



Use with the Small external corner

To view Weathertex Accessories information scan QR code.



CAVITY WALL SYSTEM - (optional)

Cavity Closer



L = 1830mm
a = Lrg 20mm
= Sml 10mm

*Made from Colorbond

Cavity Battens



1220mm x 45mm
9.5mm thickness
For all cavity constructions

*Made from Weathertex

NATURAL FINISHES

RETAIN ORIGINAL COLOUR



Weathertex Natural begins as a dark hardwood colour. Left uncoated it will lighten from UV and to retain the original colour the boards should be stained. We recommend a test spot before staining.

If you initially choose to lighten the boards but want to restore them to their original colour later, you can do so at any time. Clean the boards with a deck cleaner and a sturdy deck cleaner brush before beginning the staining process.

UNSEALED (NATURALLY LIGHTEN)



Left to weather naturally by the sun, the timber will lighten and 'silver off' after a period of time. This can produce some beautiful results that become a unique feature of the construction. For best results use this technique on buildings that are exposed to full sun and aren't obscured by fences, trees or awnings. Weathertex is made with Australian hardwood timber and colours may slightly vary season to season.

To stop the silvering off process the boards can be stained at any time which will help protect the boards from the sun, as well as allow for a new spectrum of colours. Boards can be brought back to their original dark colour by first scrubbing with a deck cleaner and then applying the appropriate coloured stain.

COLOUR, STAIN & SEALED

Weathertex Natural range can be stained and sealed in the same manner as other hardwood timbers (such as timber decking). Wash the boards down first with a deck cleaner and make sure the boards are clean and dry before staining. When staining follow the direction of the cladding to ensure each board has an even coating.

Coat the boards with a soft brush first before cutting in the edges. Add another coat, then cut in again. Minimum of two coats required, a third coat is optional (check the stain guide for recommendations), and there is no need to cut in the edges again on the third coat. Keep a wet edge throughout to make sure visible layers aren't seen on the finished product. Stopping and starting during coating may lead to an uneven finish as the stain will dry in uneven layers.

We don't recommend a clear coat or varnish, as water based stains with pigment help protect the timber from UV. Maintenance of the stain is required to stop fading over time. Make sure to also follow the stain manufacturers directions, as they may vary between products.



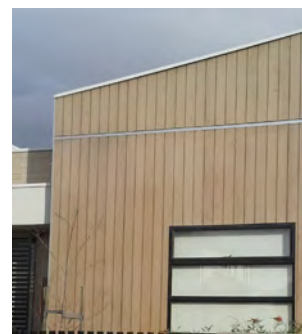
0 MONTHS: Recently built, this shows the beginning colour of Weathertex Natural boards.



4 MONTHS: The board shows signs of lightening.



7 MONTHS: The board is continuing to lighten.



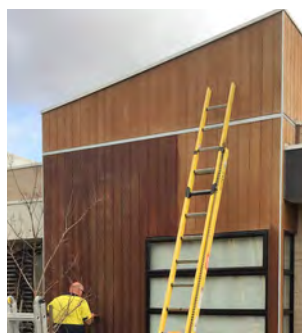
17 MONTHS: The boards are now a light blonde colour.



36 MONTHS: The boards are now very light, and are about to begin to be restored.



CLEANING: Wash the boards with a deck cleaner and a firm brush.



STAINING: Stain in the same direction that the boards run eg. Vertical for vertical cladding.



COMPLETE: After 3 coats the timber is restored and is now UV protected. Maintain the stain over time as per product directions.

NOTE: This project is only an example of the lightening and restoring process. Different projects will lighten at different speeds depending on location and exposure to sunlight.

Weathergroove 300 Natural with Weathergroove 75 Natural cut down as battens



Weathergroove 150 Natural



Weathergroove 150 Natural & Weathergroove 150 Woodsman



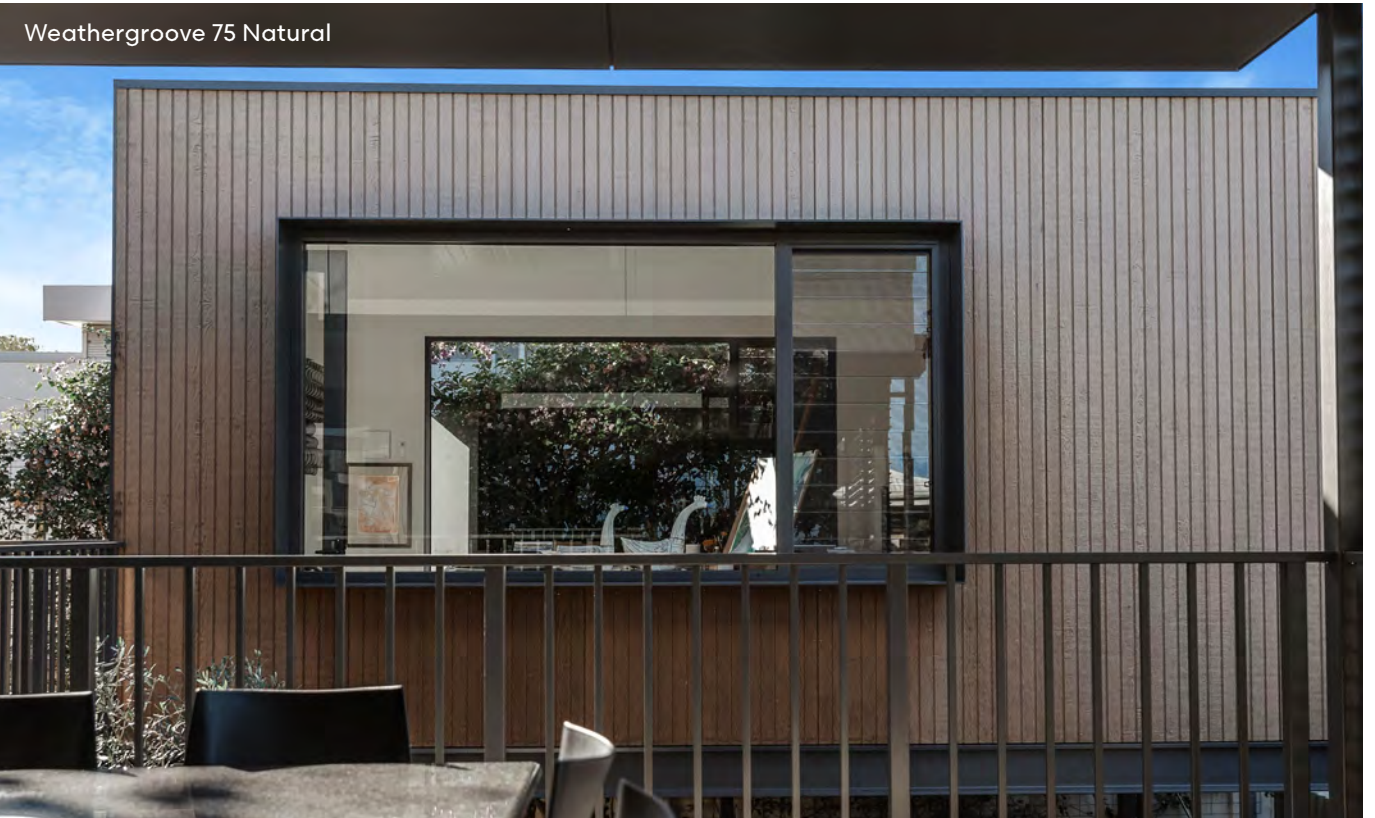
For more information on painting and staining scan QR code.



Weathergroove 150 Natural



Weathergroove 75 Natural



Weathergroove 300 Natural



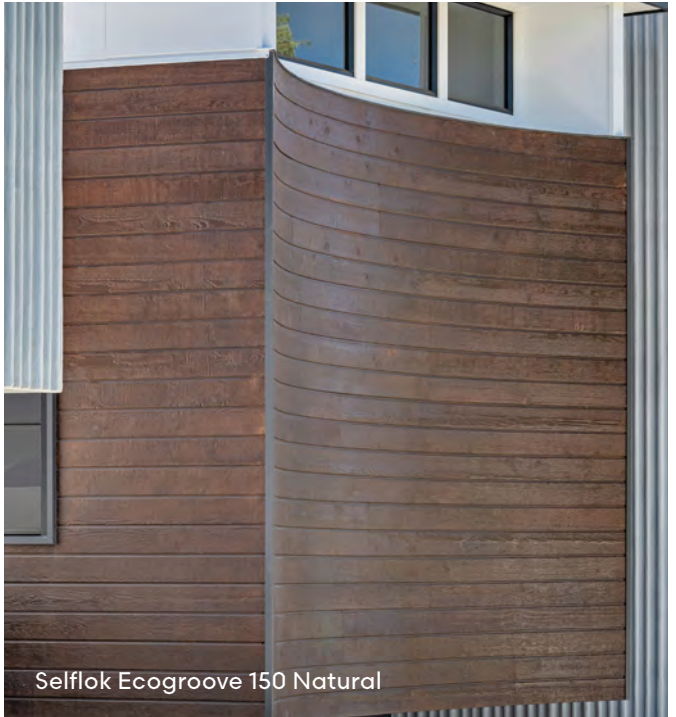
Weathergroove 150 Natural & Selflok Ecogroove 300 Smooth



Weathergroove 75 Natural



Weathergroove 150 Natural



Selflok Ecogroove 150 Natural

Weathergroove 300 Natural (with battens)



Weathergroove 150 Smooth & Selflok Vgroove 150 Natural



WEATHERGROOVE PANELS

Weathergroove is the ideal choice for the urban contemporary home. It's the largest panel available in the Australian market, making this vertically grooved panel ideal for covering large areas in a short amount of time and it's versatility offers endless possibilities.



Made from real Australian hardwoods.



Quick cost effective installation. Weathergroove has a universal edge which makes it possible to flip and reuse offcuts.



25 year warranty on Weathergroove Panels.



Off stud joining option enables minimal waste and less timber stud layout.



Tallest panel size in Australia - 3.66m height.

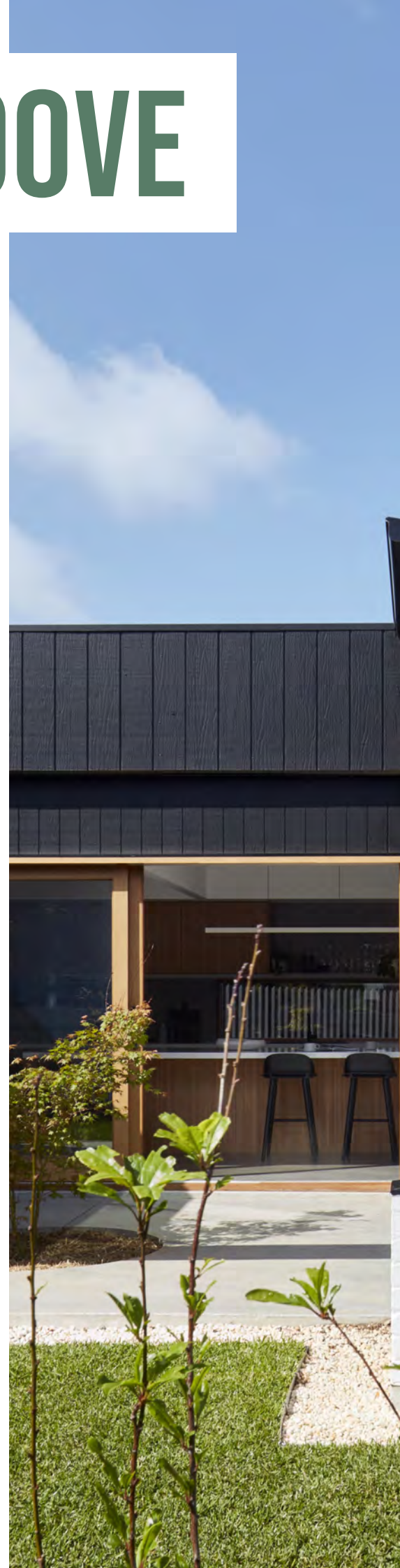


Weathergroove can be used internally (group 3) and as an external wall cladding in bushfire attack levels up to and including BAL 19 construction.

For more product information or to order a sample scan QR code.



To view installation information scan QR code.





WEATHERGROOVE



Weathergroove 150 Ruff-Sawn

PROFILES



**Weathergroove
75 Smooth**

3660h x 1196w mm



**Weathergroove
75 Woodsman**

3660h x 1196w mm



**Weathergroove
150 Smooth**

3660h x 1196w mm
2745h x 1196w mm
2440h x 1196w mm



**Weathergroove
150 Woodsman**

3660h x 1196w mm
2745h x 1196w mm
2440h x 1196w mm



**Weathergroove
150 Ruff-Sawn**

3660h x 1196w mm



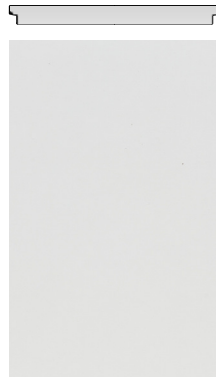
**Weathergroove
300 Smooth**

3660h x 1196w mm
2745h x 1196w mm



**Weathergroove
600 Smooth**

3660h x 1196w mm



**Weathergroove
1200 Smooth**

3660h x 1196w mm
2745h x 1196w mm



**Weathergroove
1200 Woodsman**

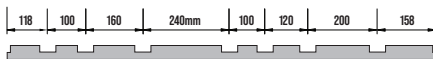
3660h x 1196w mm

All Panels are 9.5 mm in thickness. Some profiles also available in Natural.



Weathergroove Fusion Smooth

3660 x 1196mm



Weathergroove Fusion Smooth



Weathergroove Fusion Smooth

**FREE
TAKE-OFF
SERVICE**

ACCESSORIES

TRIMTEC ACCESSORIES - Made from anodised aluminium

Small Internal LF Corner



L = 3660mm
a = 27mm
b = 11mm
c = 55mm

Small External LF Corner



L = 3660mm
a = 27mm
b = 11mm
c = 31mm

Small End Stop



L = 3660mm
a = 27mm
b = 11mm
c = 46mm

Small Internal Corner



L = 3660mm
a = 4mm
b = 11mm
c = 35mm

Small External Corner



L = 3660mm
a = 17mm
b = 11mm
c = 35mm

Weathergroove Joiner



L = 3660, 2745,
2440mm
a = 11mm
b = 5mm
c = 50mm

Internal Combo Corner



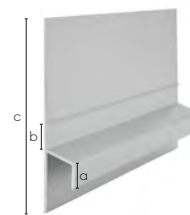
L = 3660mm
a = 20.9mm
b = 10.7mm
c = 58.3mm
d = 48.3mm
e = 4mm

External Combo Corner



L = 3660mm
a = 27.3mm
b = 20.9mm
c = 10.7mm
d = 35mm
e = 45mm

Small Z Flashing



L = 3670mm
a = 10mm
b = 10mm
c = 73mm

Small Corner Plug



Use with Small External Corner



Weathergroove 300 Smooth

CAVITY WALL SYSTEM - (optional)

Cavity Closer



L = 1830mm
a = Lrg 20mm
= Sml 10mm

*Made from Colorbond

Cavity Battens



1220mm x 45mm
9.5mm thickness
For all cavity constructions

*Made from Weathertex

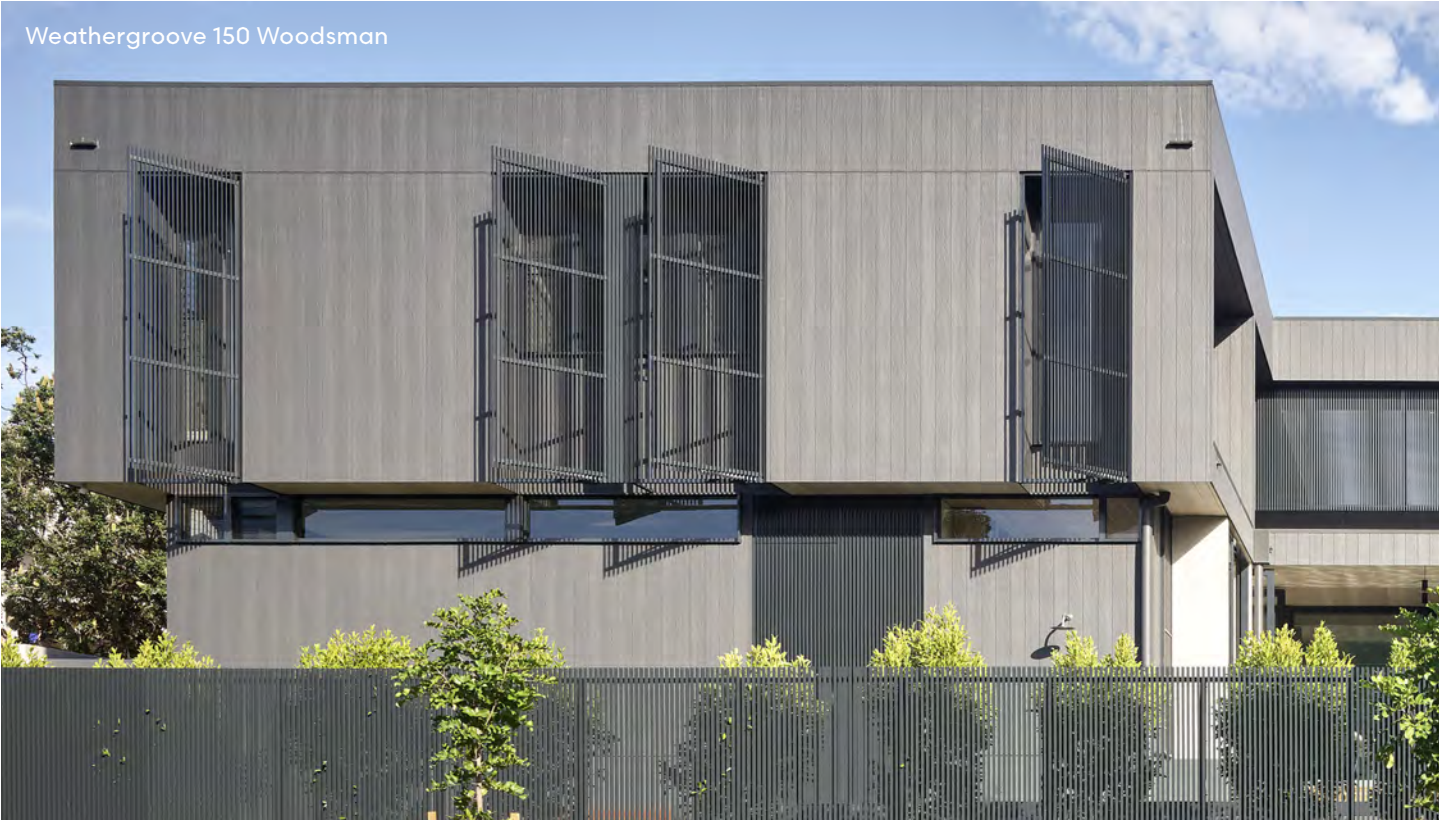
To view Weathertex
Accessories information
scan QR code.



Weathergroove 75 Smooth



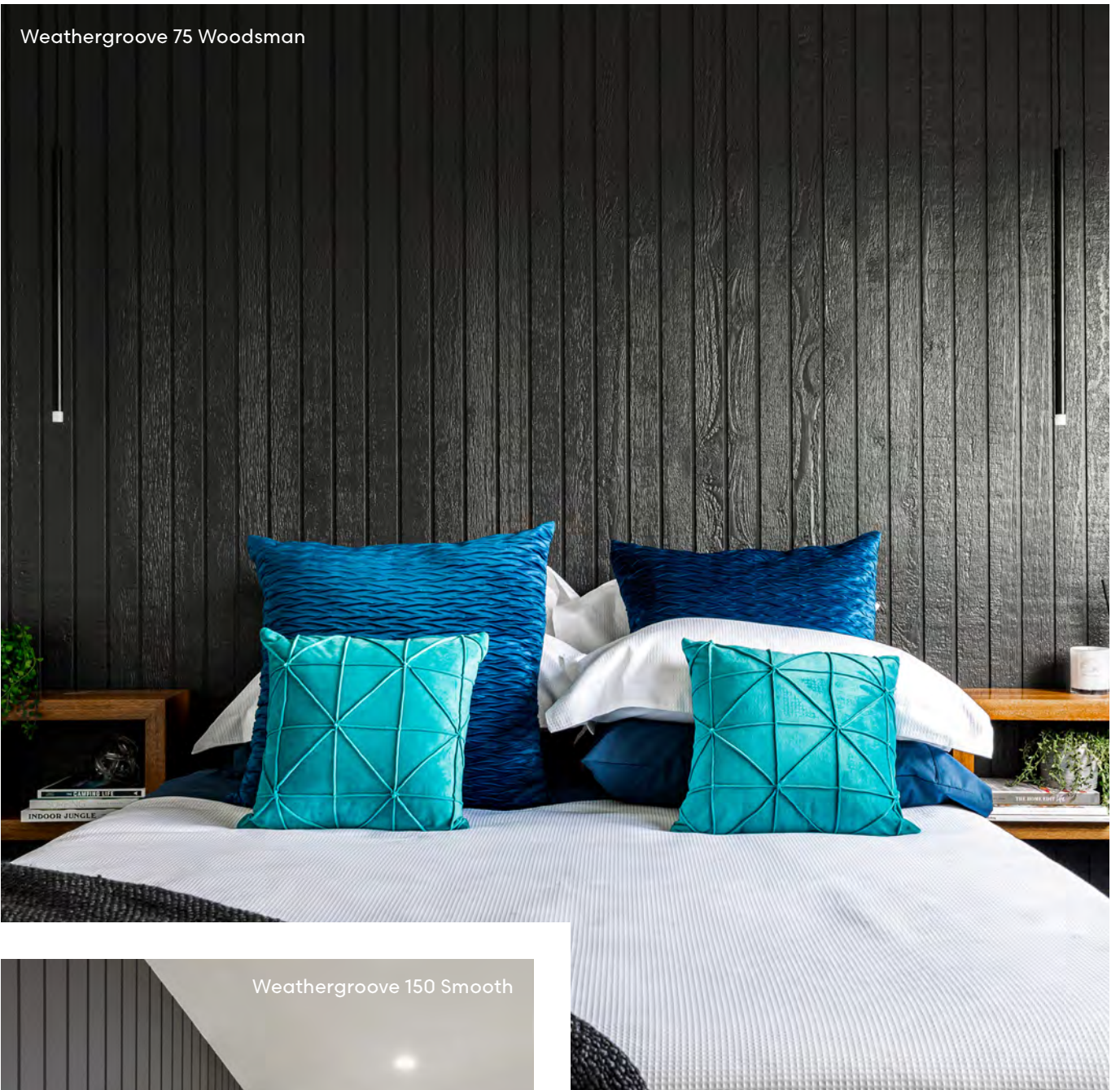
Weathergroove 150 Woodsman



Weathergroove 75 Smooth



Weathergroove 75 Woodsman



Weathergroove 150 Smooth



Weathergroove 150 Smooth





Weathergroove 150 Woodsman

Photo Courtesy: Are Media | Dog: Ollie



Weathergroove 1200 Woodsman

Weathergroove 150 Smooth



Weathergroove 150 Smooth

Weathergroove 150 Ruff-Sawn



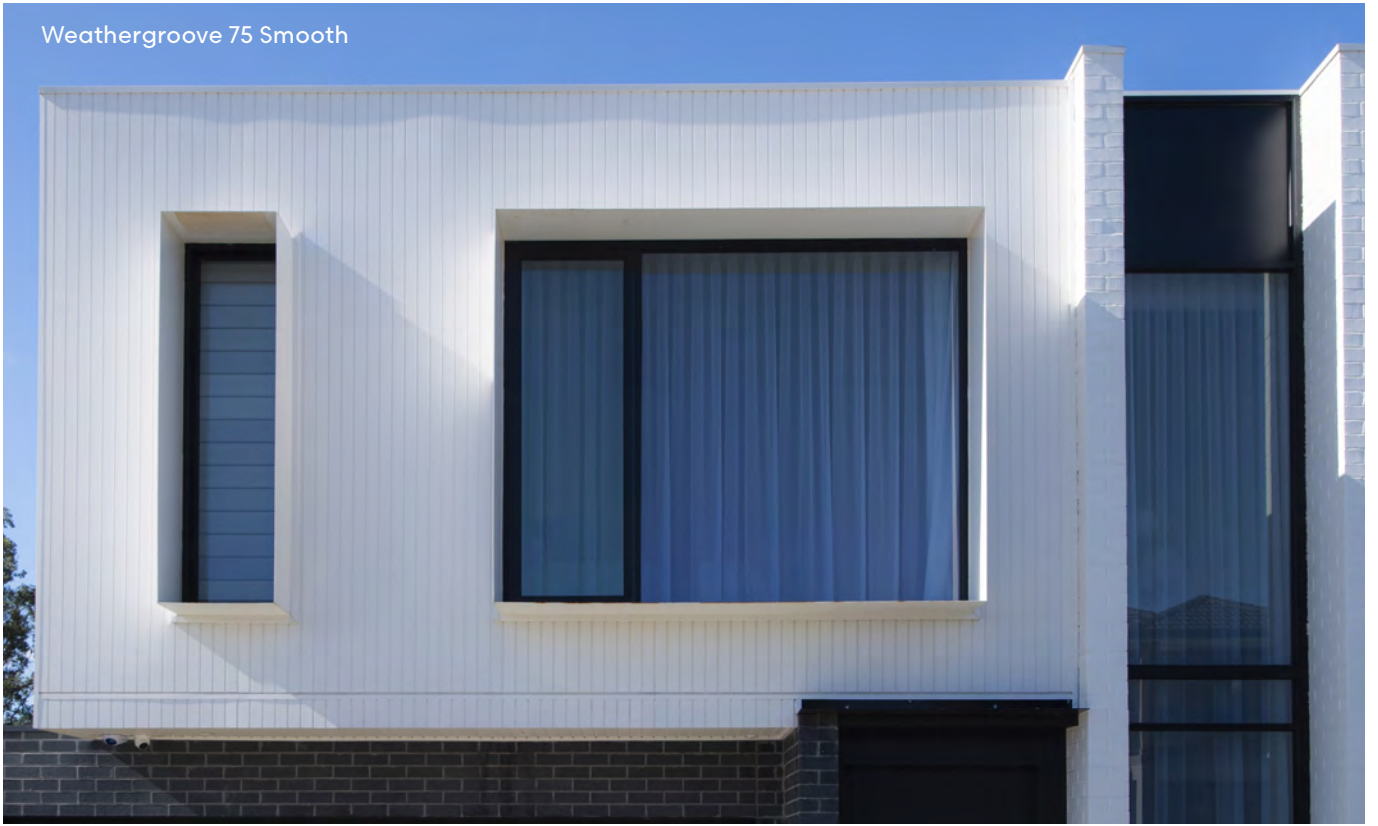
Weathergroove 150 Woodsman



Weathergroove 75 Smooth



Weathergroove 75 Smooth



Weathergroove 150 Smooth



Weathergroove 300 Smooth
& Classic Smooth



SELFLOK WEATHERBOARDS

A favourite in the Weathertex family, Selflok flat panelled appearance is a fresh alternative to traditional lapped planks and perfectly suited for the modern home. Selflok CodeMark accredited weatherboards have the simplest unique horizontal tongued groove flush system, which allows every board to self gauge. The precise routing gives the product a beautiful and unique profile that makes it the first choice for many.



Made from real Australian hardwoods.



Lightweight product.



25 year warranty on Pre-primed Selflok weatherboards.



Off stud joining option enables minimal waste and less timber stud layout.



Can be cut with standard carpentry tools.



Weathertex can be used internally (group 3) and as an external wall cladding in bushfire attack levels up to and including BAL 19 construction.

For more product information or to order a sample scan QR code.



To view installation information scan QR code.





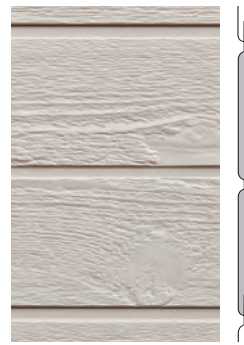
PROFILES



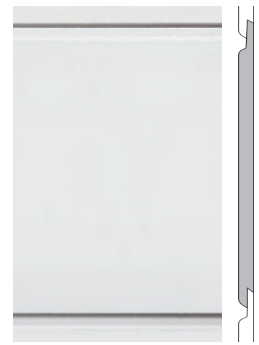
**Selflok Ecogroove
75[^] Smooth**
300h x 3660w mm



**Selflok Ecogroove
150[^] Smooth**
300h x 3660w mm



**Selflok Ecogroove
150[^] Woodsman**
300h x 3660w mm



**Selflok Ecogroove
300[^] Smooth**
300h x 3660w mm



**Selflok Millwood
Smooth**
300h x 3660w mm



**Selflok Millwood
Ruff-Sawn**
300h x 3660w mm



**Selflok Texwood
Smooth**
300h x 3660w mm



**Selflok Colonial
Smooth**
300h x 3660w mm

Weatherboards are 9.5 mm in thickness. Some profiles also available in Natural. ^ Refers to groove spacing.



**FREE
TAKE-OFF
SERVICE**

Selflok Ecogroove 150 Smooth

ACCESSORIES

WEATHERTEX ACCESSORIES - Made from Polycarbonate/ABS

Ecogroove 75 Joiners

Available in Smooth



For: Selflok Ecogroove 75 Smooth.

Ecogroove 150 Joiners

Available in Smooth & Woodgrain



For: Selflok Ecogroove 150 Smooth or Woodsman.

Ecogroove 300 Joiners

Available in Smooth



For: Selflok Ecogroove 300 Smooth.

Millwood Joiners

Available in Smooth & Ruff-Sawn



For: Selflok Millwood 300mm weatherboards

Texwood Joiners



For: Selflok Texwood Smooth

Colonial Joiners



For: Selflok Colonial Smooth

Note: All joiners are installed off stud.

TRIMTEC ACCESSORIES - Made from anodised aluminium

Small Internal LF Corner



L = 3660mm
a = 27mm
b = 11mm
c = 55mm

Small External LF Corner



L = 3660mm
a = 27mm
b = 11mm
c = 31mm

Small End Stop



L = 3660mm
a = 27mm
b = 11mm
c = 46mm

Small Internal Corner



L = 3660mm
a = 4mm
b = 11mm
c = 35mm

Small External Corner



L = 3660mm
a = 17mm
b = 11mm
c = 35mm

Long Vertical Joiner



L = 3660mm
a = 20mm
b = 70mm

Internal Combo Corner



L = 3660mm
a = 20.9mm
b = 10.7mm
c = 58.3mm
d = 48.3mm
e = 4mm

External Combo Corner



L = 3660mm
a = 27.3mm
b = 20.9mm
c = 10.7mm
d = 35mm
e = 45mm

Small Corner Plug



Use with Small External Corner

To view Weathertex Accessories information scan QR code.



CAVITY WALL SYSTEM - (optional)

Cavity Closer



L = 1830mm
a = Lrg 20mm
= Sml 10mm

*Made from Colorbond

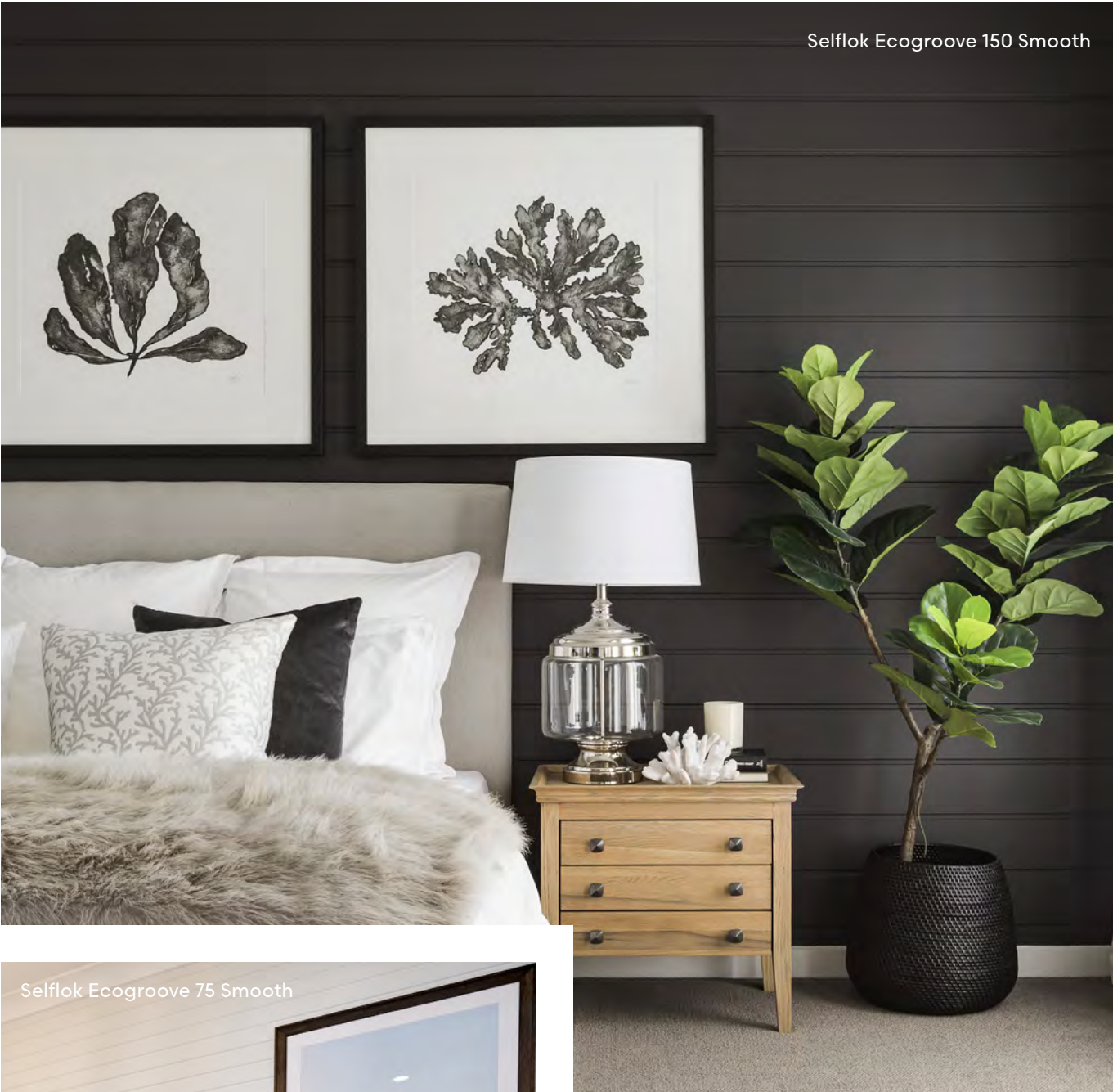
Cavity Battens



1220mm x 45mm
9.5mm thickness
For all cavity constructions

*Made from Weathertex

Selflok Ecogroove 150 Smooth



Selflok Ecogroove 75 Smooth



NEW
RELEASE

Selflok Ecogroove 150 Smooth



Selflok Colonial Smooth &
Selflok Ecogroove 300 Smooth



Selflok Ecogroove 150 Smooth (Ceiling)



Selflok Millwood Smooth & Classic Shingles Plus



Selflok Ecogroove 150 Smooth (ceiling) & Weathergroove 150 Smooth (island bench)





Selflok Ecogroove 300 Smooth



Selflok Millwood Smooth



Selflok Ecogroove 300 Smooth & Primelok Smooth



PRIMELOK WEATHERBOARDS

Primelok is our most popular range for achieving traditional sophistication and elegance. Regardless if you select Hamptons styling for urban living or a more relaxed coastal style, Primelok has a wide range of profiles to create this look.



Made from real Australian hardwoods.



Lapping of board conceals fixings.



25 year warranty not to rot, split or crack.



Exclusive easy-aligning boards saving time and labour costs.



Single person install.



Weathertex can be used internally (group 3) and as an external wall cladding in bushfire attack levels up to and including BAL 19 construction.

For more product information or to order a sample scan QR code.



To view installation information scan QR code.





PRIMELOK

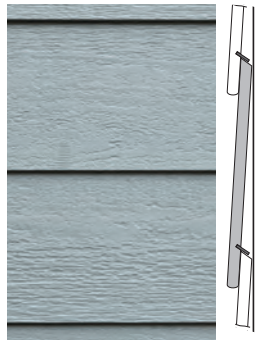
Primelok Smooth

PRIMELOK PROFILES



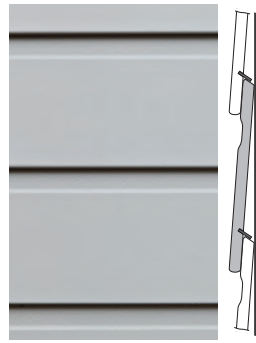
Primelok Smooth

200h x 3660w mm



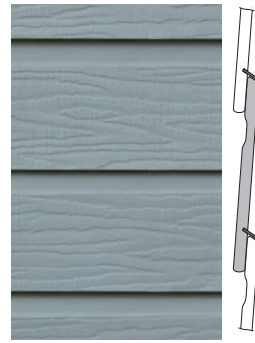
Primelok Woodsman

200h x 3660w mm



Primelok Federation Smooth

170h x 3660w mm



Primelok Federation Ruff-Sawn

170h x 3660w mm



Primelok Shadowood Smooth

170h x 3660w mm

Weatherboards are 9.5 mm in thickness.



FREE
TAKE-OFF
SERVICE

ACCESSORIES

WEATHERTEX ACCESSORIES - Made from Polycarbonate/ABS

Traditional Off Stud Joiner

Available in Smooth or Woodgrain



For: Primelok 200 smooth, or Primelok Woodsman

Federation Joiners

Available in Smooth or Woodgrain



For: Primelok Federation Smooth or Primelok Federation Ruff-Sawn

Shadowood Joiners

Available in Smooth



For: Primelok Shadowood Smooth

170mm Concealed Joiner



For: Primelok 170 Weatherboards

200mm Concealed Joiner



For: Primelok 200mm Weatherboards

Primelok Starter Strip



*Made from Colorbond

For: ALL Primelok Weatherboards
L = 1830mm

TRIMTEC ACCESSORIES - Made from anodised aluminium

Large External Corner



L = 3000mm
a = 27mm
b = 21mm
c = 35mm

Large Internal Corner



L = 3000mm
a = 4mm
b = 21mm
c = 35mm

Large Long Vertical Joiner



L = 3000mm
a = 27mm
b = 70mm
c = 20.9mm

Large End Stop



L = 3660mm
a = 27mm
b = 21mm
c = 46mm

Internal Combo Corner



L = 3660mm
a = 20.9mm
b = 10.7mm
c = 58.3mm
d = 48.3mm
e = 4mm

External Combo Corner



L = 3660mm
a = 27.3mm
b = 20.9mm
c = 10.7mm
d = 35mm
e = 45mm

Large Corner Plug



Use with Large External corner

CAVITY WALL SYSTEM - (optional)

Cavity Closer



L = 1830mm
a = Lrg 20mm
= Sml 10mm

*Made from Colorbond

Cavity Battens



1220mm x 45mm
9.5mm thickness
For all cavity constructions

*Made from Weathertex

To view Weathertex Accessories information scan QR code.



Primelok Shadowood Smooth



Primelok Smooth &
Selflok Ecogroove 150 Natural





Primelok Smooth





Primelok Smooth



Primelok Federation Smooth

Primelok Shadowood Smooth



Primelok Shadowood Smooth



CLASSIC WEATHERBOARDS

Weathertex Classic weatherboards are truly an Australian classic. Choose Smooth or Ruff-Sawn texture finishes to create a clean, smart-looking home. They blend perfectly with other building materials providing limitless design and decorative solutions.



Made from real Australian hardwoods.



Value option - perfect for renovations on a tight budget.



25 year warranty on Classic weatherboards and 10 year warranty on wall Shingles Plus not to rot, split or crack.



Off stud cladding joining option enables minimal waste and less timber stud layout.



Can be cut with standard carpentry tools.



Weathertex can be used internally (group 3) and as an external wall cladding in bushfire attack levels up to and including BAL 19 construction.

For more product information or to order a sample scan QR code.



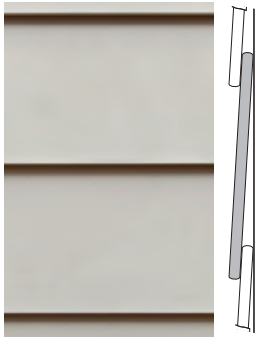
To view installation information scan QR code.



CLASSIC

Classic Smooth

CLASSIC PROFILES



Classic Smooth

200h x 3660w mm



Classic Ruff-Sawn

200h x 3660w mm



Classic Rusticated Smooth

200h x 3660w mm



Classic Shingles Plus Smooth

225h x 1196w mm

Weatherboards are 9.5 mm in thickness.

Classic Shingles Plus also available in Natural.



FREE
TAKE-OFF
SERVICE

ACCESSORIES

WEATHERTEX ACCESSORIES - Made from Polycarbonate/ABS

Traditional Off Stud Joiner

Available in Smooth or Woodgrain



For: Classic 200 Smooth, Classic 200 Ruff-Sawn.

Rusticated Joiners

Available in Smooth



For: Classic Rusticated 200 Smooth

To view Weathertex Accessories information scan QR code.



TRIMTEC ACCESSORIES - Made from anodised aluminium

Large External Corner



L = 3000mm
a = 27mm
b = 21mm
c = 35mm

Large Internal Corner



L = 3000mm
a = 4mm
b = 21mm
c = 35mm

Weathergroove Joiner

For: Classic Shingles Plus only



L = 3660, 2745, 2440mm
a = 11mm
b = 5mm
c = 50mm

Internal Combo Corner



L = 3660mm
a = 20.9mm
b = 10.7mm
c = 58.3mm
d = 48.3mm
e = 4mm

Large End Stop



L = 3660mm
a = 27mm
b = 21mm
c = 46mm

Large Long Vertical Joiner



L = 3000mm
a = 27mm
b = 70mm
c = 20.9mm

External Combo Corner



L = 3660mm
a = 27.3mm
b = 20.9mm
c = 10.7mm
d = 35mm
e = 45mm

Large Corner Plug



Use with Large External corner

CAVITY WALL SYSTEM - (optional)

Cavity Closer



L = 1830mm
a = Lrg 20mm
= Sml 10mm

*Made from Colorbond

Cavity Battens



1220mm x 45mm
9.5mm thickness
For all cavity constructions

*Made from Weathertex



Classic Smooth,
Weathergroove 150 Smooth &
Selflok Ecogroove 150 Natural



Classic Smooth

Classic Smooth



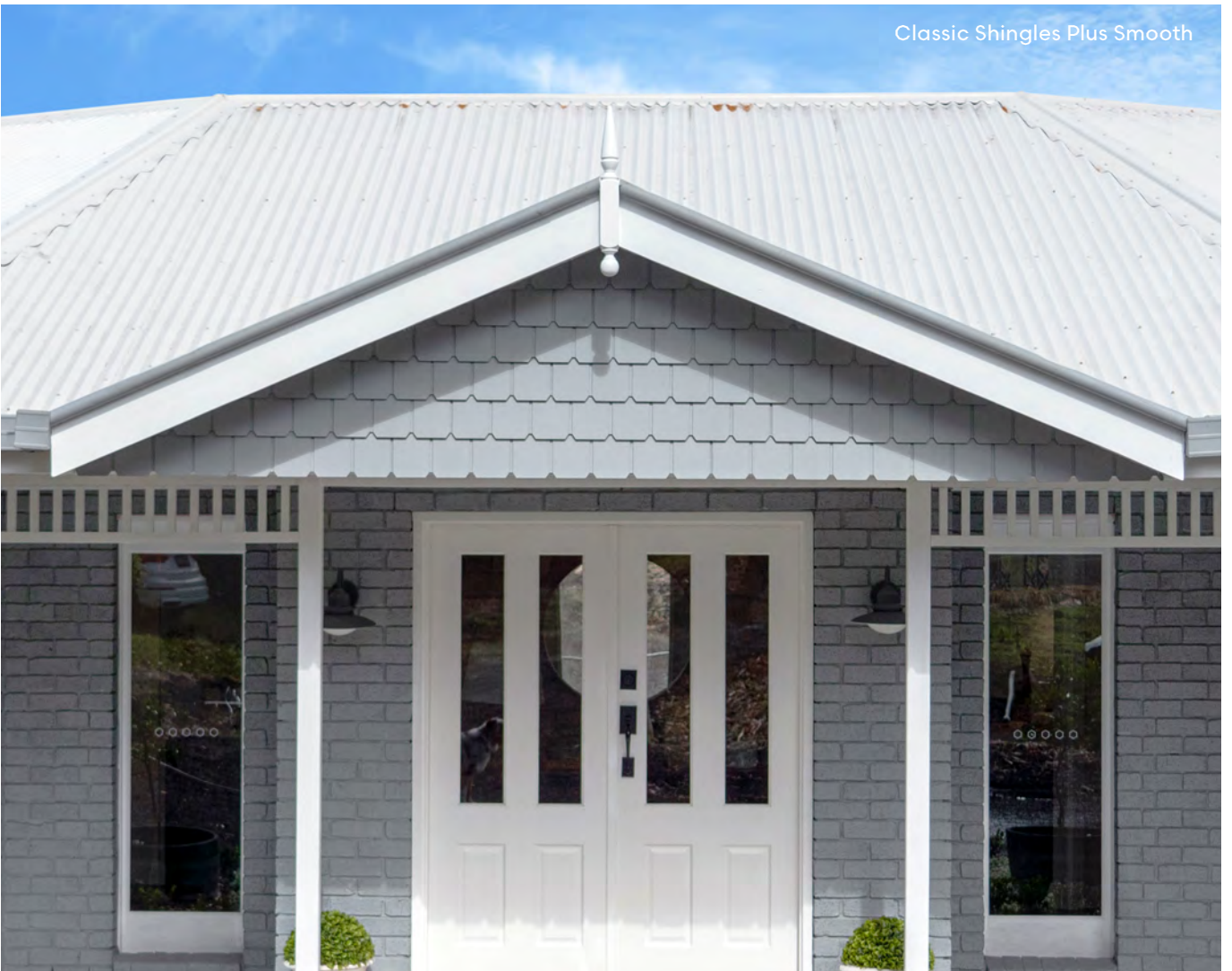
Classic Rusticated Smooth



Classic Rusticated Smooth



Classic Shingles Plus Smooth



Classic Ruff-Sawn



Classic Smooth



Classic Smooth

RUBIX PANELS

Rubix is a self-locking architectural panel available in square or rectangular formats that provide unprecedented flexibility and ease of installation. No joining accessories are required for installation.



Made from real Australian hardwoods.



Self locking system.



10 year warranty on Rubix Panels.



Modern clean lines.



Create unique geometric patterns.

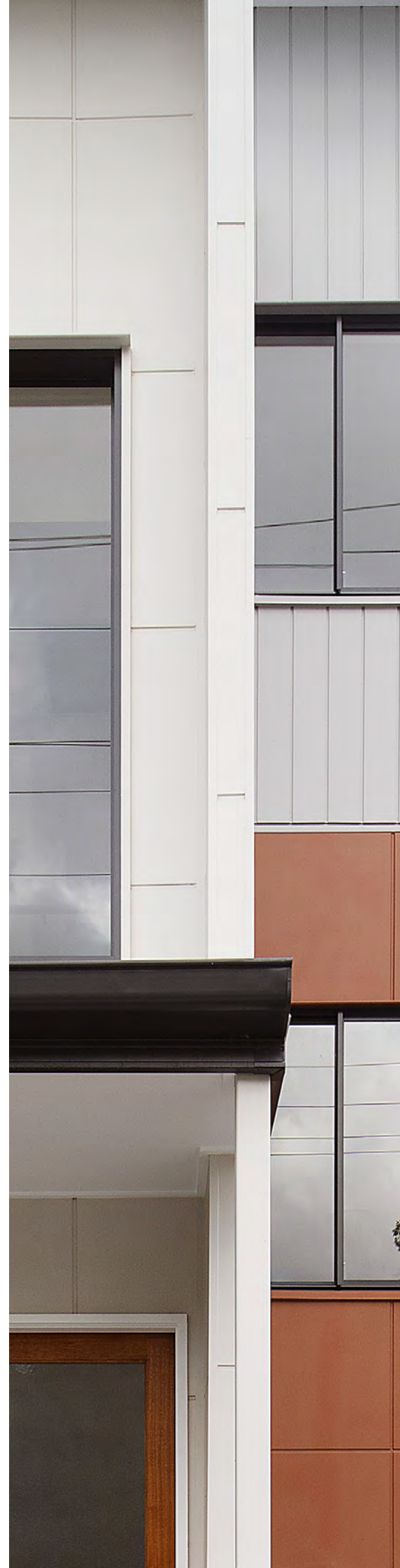


WeatherTex can be used internally (group 3) and as an external wall cladding in bushfire attack levels up to and including BAL 19 construction.

For more product information or to order a sample scan QR code.



To view installation information scan QR code.





PROFILES

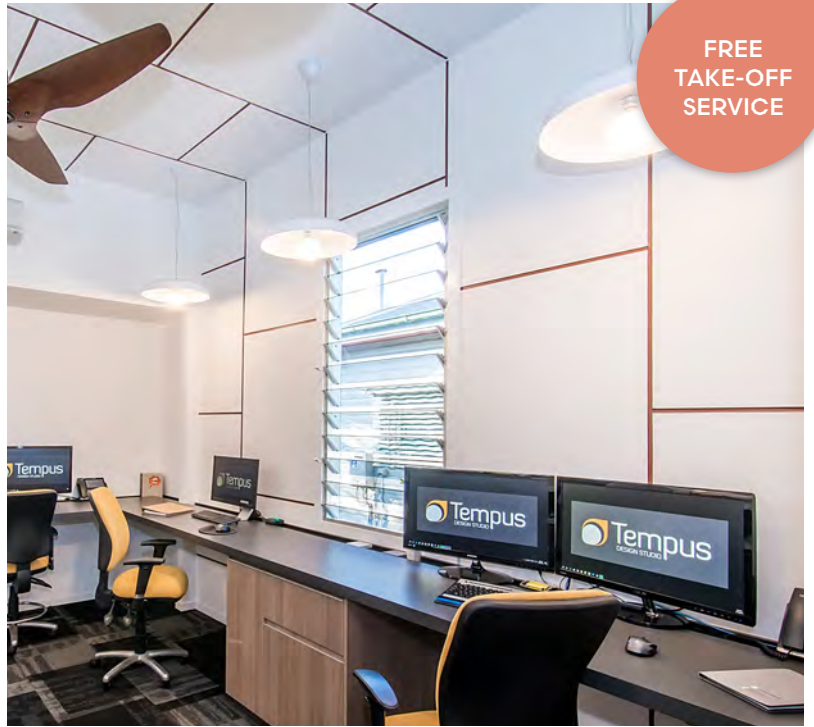


Rubix Smooth

1200 x 1200mm
1200 x 900mm

All Panels are 9.5 mm in thickness.

(IMAGE SHOWS 4 PANELS INTERLOCKING TOGETHER)



Rubix Smooth &
Weathergroove 150 Ruff-Sawn

ACCESSORIES

TRIMTEC ACCESSORIES - Made from anodised aluminium

Small Internal LF Corner



L = 3660mm
a = 27mm
b = 11mm
c = 55mm

Small External LF Corner



L = 3660mm
a = 27mm
b = 11mm
c = 31mm

Small End Stop



L = 3660mm
a = 27mm
b = 11mm
c = 46mm

Small Internal Corner



L = 3660mm
a = 4mm
b = 11mm
c = 35mm

Small External Corner



L = 3660mm
a = 17mm
b = 11mm
c = 35mm

Small Corner Plug



Use with Small External Corner

Internal Combo Corner



L = 3660mm
a = 20.9mm
b = 10.7mm
c = 58.3mm
d = 48.3mm
e = 4mm

External Combo Corner



L = 3660mm
a = 27.3mm
b = 20.9mm
c = 10.7mm
d = 35mm
e = 45mm

CAVITY WALL SYSTEM - (Optional)

Cavity Closer



L = 1830mm
a = Lrg 20mm
= Sml 10mm

*Made from Colorbond

Cavity Battens



1220mm x 45mm
9.5mm thickness
For all cavity constructions

*Made from Weathertex

To view Weathertex Accessories information scan QR code.





Rubix Smooth &
Weathergroove 1200 Smooth



Rubix Smooth &
Weathergroove 150 Smooth



Weathergroove 150 Smooth &
Selflok Ecogroove 150 Smooth



weathertex.com.au | Ph: 1800 040 080 | Fax: 1800 647 926



Last updated 15th December 2022
Disclaimer: Product Catalogue to be used only as a guide. For installation practices refer to the relevant sections of the National Construction Code, Australian Standards and Weathertex Installation Manual.

Weathertex® is made in Australia by Weathertex Pty Ltd
ABN 67 084 713 986
PO Box 21, Raymond Terrace NSW 2324